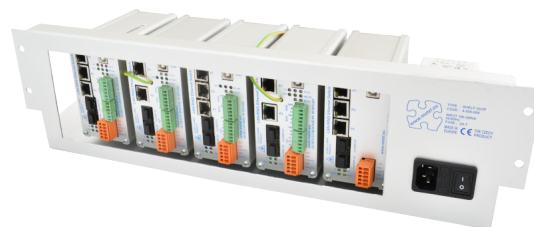


Pull-out shelves 19"/3U

- Retractable version 19
- Easy installation and maintenance
- Including 100W power supply 48-56VDC
- Compatible with PoE, PoE+, PoE++
- Installation of up to 5 LAN-RING switches
- Installation of up to 9 media converters



The 19" SHELF-3U/IP-SU racks are designed for fast and professional mounting of LAN-RING industrial switches and media converters in 19" racks. Included are guides to allow partial or complete removal of the shelf from the 19" rack.

Available models

Order name	Order code
SHELF-3U/IP-SU	4-500-009



Technical parameters

MECHANICAL

Switch slots count	5
Material	AL sheet
Weight	1 kg without switches
Dimensions - h / w / d	3U x 483 x 153 mm

POWER

Input voltage range	207 - 253 VAC
Output voltage range	48 - 57 VDC
Power	100 W
Efficiency	88 %
Operating temperature	-10...+60 °C

Standards and protocols

Standard	Note
----------	------

EMC and safety

Standard	Level	Note
EN 61000-6-2		Immunity - industrial environment
IEEE 1613		Environmental and Testing Requirements Electric Power Substations
EN 50130-4 ed. 2		Alarm systems - Part 4: Electromagnetic compatibility
EN 55035		EMC of multimedia devices - immunity requirements
EN 55032		EMC of multimedia devices - emission requirements
EN 62368-1		Safety requirements of Information technology equipment
EN IEC 63000		The Assessment Of Electrical And Electronic Products With Respect To The ROHS

Notes

- The manufacturer reserves the right to change technical parameters without prior notice.

Document created on 02/10/2026 05:51AM:54